

IntraVUE Provides a Framework for IP Cameras

As deployment of IP cameras accelerate in a variety of applications, the ability to provide a simple support tool will become increasingly important. IP cameras using multicast transmissions will put a variable and increasing load on the TCP/IP networks. This load and the load of other systems can cause slow downs and interruptions that may not be easily understood. Camera performance may be questioned when in reality it was a network problem such as a poorly performing switch or connection problem.

IntraVUE is a software package that automatically discovers and automatically maps all IP devices that are put into its scan range. This tool can be used to simplify installations and left to provide continuous 24 x 7 monitoring. IntraVUE is a simple and easy to use tool to diagnose problems such as:

- Exact architecture of the Network Vision
- Duplicate IP and MAC addresses
- Intermittent connection problems (such as grounding problems)
- Switch resets and lockups
- Foreign devices taking up bandwidth
- Configuration problems

The continually monitoring and dynamically changing visual provided by IntraVUE will provide an accurate view of the network of connected devices. As seen in the following picture IntraVUE will allow an easy viewing of the connected devices.

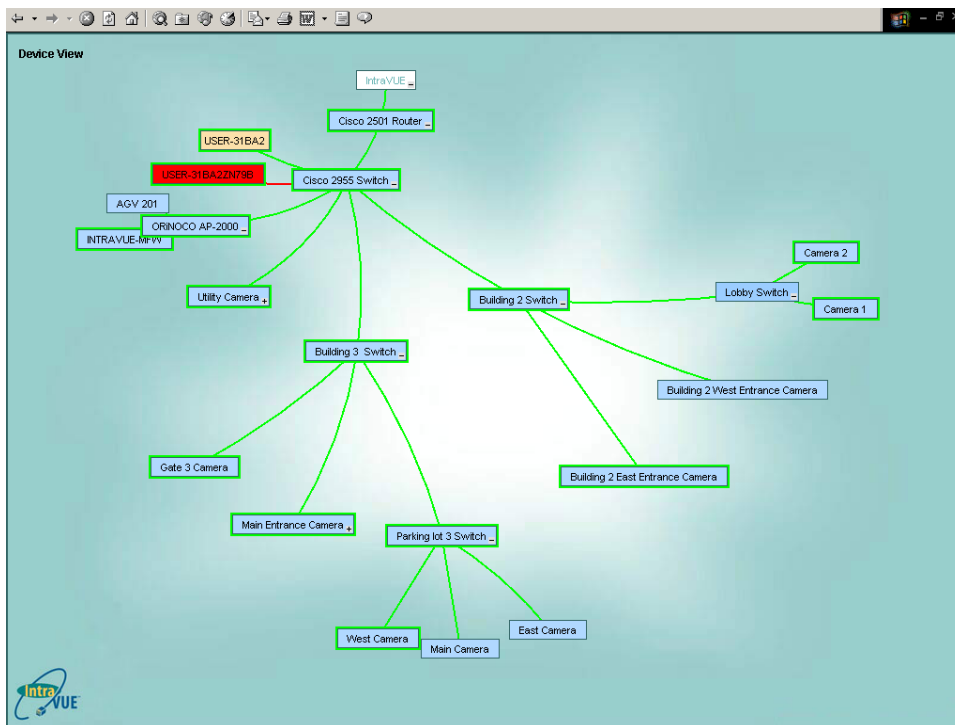


Figure 1. Camera and switch architecture

The graphic displays green lines for health communications. If a problem occurs the line will turn yellow indicating a parameter being monitored has exceeded its preset limit. Red lines indicate a failure or loss of communications to the device. The color-coding can quickly and easily identify potential problems.

Right clicking on a box will allow the user to bring up the unique properties of the device or go to its embedded web page. IntraVUE provides the structure or framework to make troubleshooting a device extremely easy. All aspects of a device including User Manuals are a click away. The following is a view of a selected device. In addition to the device details and links the user can ping, telnet, or ftp the device if these features are active. This simplifies interfacing and allows IntraVUE to be the single interface to not only the Cameras but the network equipment as well.

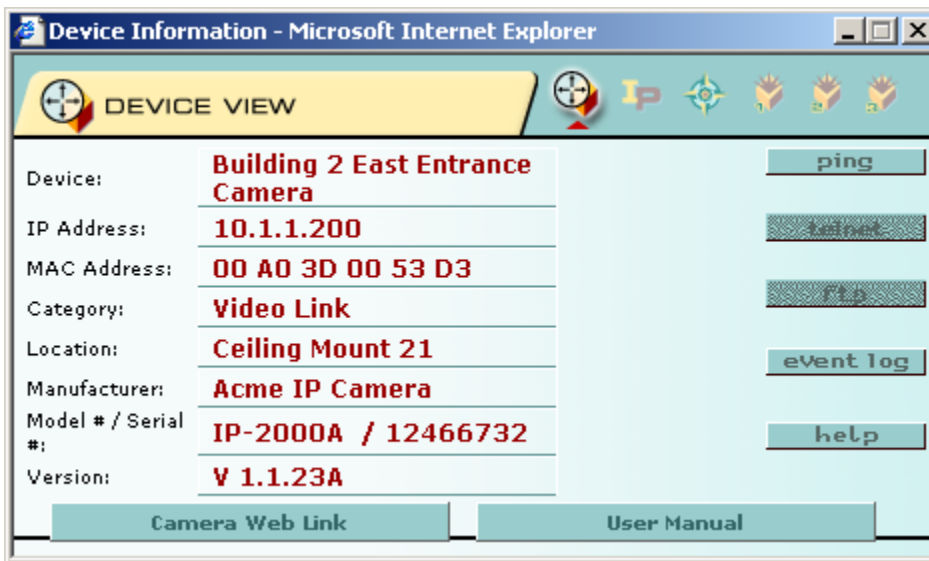


Figure 2. Device information helps quickly provide all the needed details

If a replacement for a fixed IP device is required the Auto-IP feature of IntraVUE can be deployed. This feature insures that the fixed IP address of the failed unit is placed in the replacement unit. Several camera installations find this a key factor in selecting IntraVUE. The service technician merely plugs the network cable into the replacement and powers the unit up. Auto-IP will not only assign the accurate IP address but can also initiate a boot file to configure the unit to the previous unit's settings.

IntraVUE is a complimentary tool for anyone deploying IP cameras and equipment. For more information please contact Network Vision Inc. at 978-499-7800 or email at info@intravue.net or visit our website at www.intravue.net